

tri pointe[®]

HOMES

COMMUNITY ▶

SITEPLAN ▶

FLOORPLANS ▶

INCLUDED FEATURES ▶



Highlands Collection

5298 Coastal Sage Trails San Diego, California 92130

Life-changing by Design

Highlands Collection

Perfection is in the details. At The Highlands Collection, it's felt in the way soft ocean breezes wash across courtyards, loggias and spacious backyards. It's reflected in modern appliances gleaming in a sun-kissed kitchen. It's celebrated in the balance of eco-friendly, yet luxurious living. Here, your needs are not only met, but anticipated. Perfectly.

Unparalleled location

Awaken your senses in a modern costal haven

Set in the highly coveted, well-established, Coastal North San Diego County master-planned community of Pacific Highlands Ranch, Highlands Collection offers access to private, resort-style amenities, 1,300 acres of preserved native habitat and nearby beaches. And The Village at Highlands Ranch provides the perfect venue for your social calendar, whether you're shopping, grabbing a coffee to go or dining with friends.

- ▶ Inspiring parks and beaches
- ▶ Major employers and education centers
- ▶ Welcoming boutique shops
- ▶ Delicious, diverse dining
- ▶ Exciting entertainment

Kristen LaPrade | Mary DiMarco

NEW HOME ADVISORS

E PHRsales@tripointehomes.com

P 858.794.2542

W TriPointeHomes.com/Highlands-Collection

A 5298 Coastal Sage Trails, San Diego, CA 92130

LICENSE #01942547 | #01300513

Highlands Collection

SITE MAP



LEGEND

R - REVERSE

Plan One

Approx. 4,138 Sq Ft | 4–5 Bedrooms | 4.5–5.5 Bathrooms | Single-Story

4-Bay Garage/Optional Bed 5 and Bath 5 | Flex Room | Den/Office/Optional GenSmart Suite



**MAKE IT YOUR
MASTERPIECE**

Click here to explore
all the options
available for this plan

Plan One

Approx. 4,138 Sq Ft | 4-5 Bedrooms | 4.5-5.5 Bathrooms | Single-Story

4-Bay Garage/Optional Bed 5 and Bath 5 | Flex Room | Den/Office/Optional GenSmart Suite



SINGLE-STORY

Plan Two

Approx. 4,675 Sq Ft | 4-5 Bedrooms | 4.5-5.5 Bathrooms | Two-Story

3-Bay Garage | Guest Casita/Optional GenSmart Suite | Loft/Optional Bed 5 and Bath 5 | Optional Deck



Plan Two

**MAKE IT YOUR
MASTERPIECE**

Click here to explore
all the options
available for this plan

Approx. 4,675 Sq Ft | 4-5 Bedrooms | 4.5-5.5 Bathrooms | Two-Story

3-Bay Garage | Guest Casita/Optional GenSmart Suite | Loft/Optional Bed 5 and Bath 5 | Optional Deck

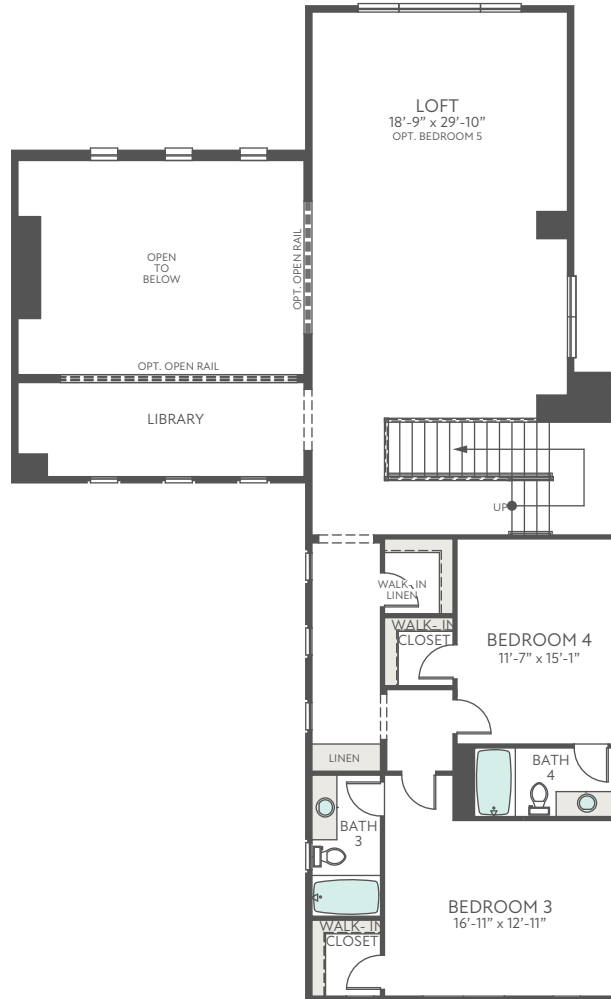


FIRST FLOOR

Plan Two

Approx. 4,675 Sq Ft | 4-5 Bedrooms | 4.5-5.5 Bathrooms | Two-Story

3-Bay Garage | Guest Casita/Optional GenSmart Suite | Loft/Optional Bed 5 and Bath 5 | Optional Deck



SECOND FLOOR

Plan Three

Approx. 5,051 Sq Ft | 5 Bedrooms | 5.5 Bathrooms | Two-Story

3-Bay Garage | Optional Prep/Chef Kitchen | Loggia 2/Optional Office | Guest Casita/Optional GenSmart Suite



Plan Three

**MAKE IT YOUR
MASTERPIECE**

Click here to explore
all the options
available for this plan

Approx. 5,051 Sq Ft | 5 Bedrooms | 5.5 Bathrooms | Two-Story

3-Bay Garage | Optional Prep/Chef Kitchen | Loggia 2/Optional Office | Guest Casita/Optional GenSmart Suite



FIRST FLOOR

Plan Three

Approx. 5,051 Sq Ft | 5 Bedrooms | 5.5 Bathrooms | Two-Story

3-Bay Garage | Library/Game Room | Loggia 2/Optional Office | Guest Casita/Optional GenSmart Suite



SECOND FLOOR

Highlands Collection

INCLUDED FEATURES

KITCHEN

- Slab granite or quartz countertops in choice of colors with 6" splash, full splash at range top and generous kitchen islands
- Thermador/Bosch stainless steel appliances: 48" professional rangetop, cabinet hood, double oven, microwave and dishwasher
- Sterling Stainless Steel 32" x 18" kitchen sink
- Delta Essa Arctic stainless pull down kitchen faucet
- Standard cabinetry in white thermafoil
- Elite brand undercabinet LED lighting
- Insinkerator Badger 5 ½ HP garbage disposal
- USB charging outlet

BATHS (Primary Bath and Powder Room)

- Frameless vanity mirrors (no medicine cabinets)
- Slab granite or quartz counter tops with 6" splash
- Kohler Caxton undermount sink
- Delta Ashlyn chrome plumbing fixtures with matching bath accessories
- Kohler Sterling Windham comfort height toilets
- Kohler Stargaze 72" freestanding bathtub
- 3/8" glass shower enclosure
- Daltile ceramic tile at shower walls and floor in primary bathroom

BATHS (Secondary Baths)

- Frameless vanity mirrors
- Slab granite or quartz counter tops with 6" splash
- Kohler Caxton undermount sink
- Delta Ashlyn chrome plumbing fixtures with matching bath accessories
- Kohler Sterling Windham comfort height toilets
- Fibre Care fiberglass tub
- Daltile ceramic tile at tub walls, shower walls and shower floor

LAUNDRY

- Florestone laundry room sink
- Delta single handle faucet
- Slab granite or quartz countertops with 6" splash
- Lower cabinets with optional uppers

INTERIORS

- Hollow core Jeldwen interior doors with Schlage satin nickel hardware
- Walk-in closets with hollow core doors in pre-selected areas
- 5 ½" decorative base molding
- Volume ceilings (per plan)
- Standard Heat n Glo interior fireplace
- Ceiling fan prewire (per plan)

ENERGY- AND HEALTH-FRIENDLY FEATURES

- LED disc lights with dimmer switches where required by code
- Interior low-VOC paint
- Radiant roof barrier
- Rinnai tankless water heater with on-demand pump and recirc system
- Carrier HVAC system
- WiFi enabled Honeywell programmable thermostat
- Conduit provided for future rooftop solar
- Conduit provided for future electric vehicle charging (wiring and charging station optional)

EXTERIORS

- Thermatrue "Pulse" entry door (style per elevation) with Schlage satin nickel hardware
- Anderson windows and French doors
- Kichler outdoor LED wall light fixtures
- Wayne Dalton insulated steel garage door
- LiftMaster WiFi enabled garage door opener (with optional keyless entry pad)

Tri Pointe Homes is proud to offer a variety of ways you can personalize your new home through our Design Studio.

Please see your New Home Advisor for additional customizing opportunities.