

Blanc

A Neighborhood by TRI Pointe Homes®

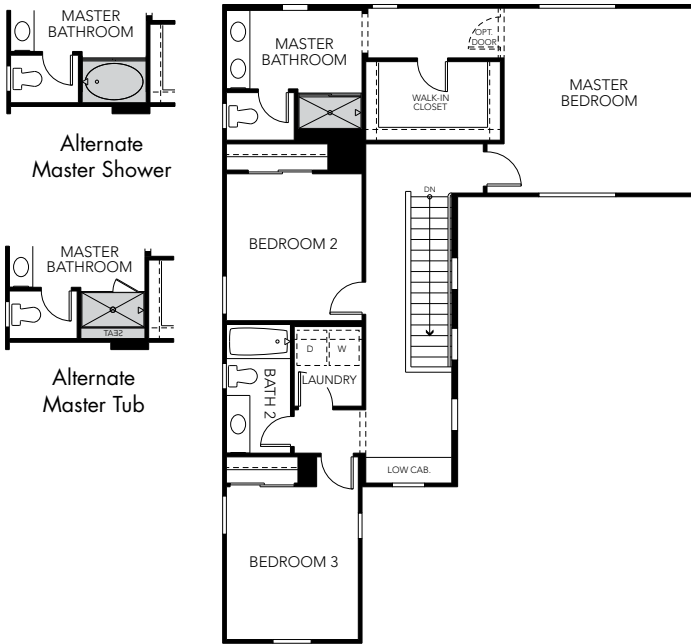
Blanc

GLEN LOMA RANCH

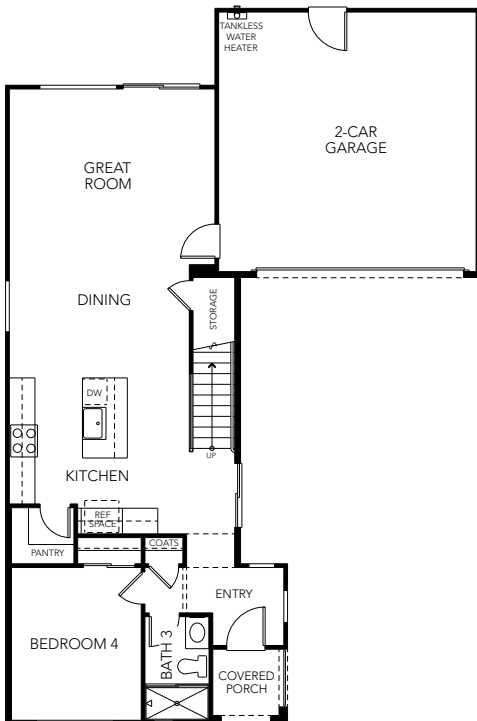
PRELIMINARY

RESIDENCE 1

Approx. 1,953 Sq. Ft.
 4 Beds
 3 Baths
 2-Car Garage



SECOND FLOOR



FIRST FLOOR



The prices of our homes, included features, plans, specifications, promotions/incentives, neighborhood build-out and available locations are subject to change without notice. Stated dimensions, square footage and acreage are approximate and should not be used as a representation of any home's or homesite's precise or actual size, location or orientation. There is no guarantee that any particular homesite or home will be available. Not all features and options are available in all homes. Unless otherwise expressly stated, homes do not come with hardscape, landscape, or other decorator items. Any photographs or renderings used herein reflect artists' conceptions and are for illustrative purposes only. Community maps, illustrations, plans and/or amenities reflect our current vision and are subject to change without notice. Maps not to scale. Photographs or renderings of people do not depict or indicate any preference regarding race, religion, gender, sexual orientation, disability, familial status, or national origin. Builder does not warrant the suitability of any trail for any use or for any person. Our name and the logos contained herein are registered trademarks of TRI Pointe Group, Inc. and/or its subsidiaries. CA Contractor's License No. 1018637. CA DRE License No. 02025660. © 2019 TRI Pointe Homes, Inc., a member of the TRI Pointe Group. All rights reserved. 4/19

Blanc

GLEN LOMA RANCH

PRELIMINARY

RESIDENCE 2

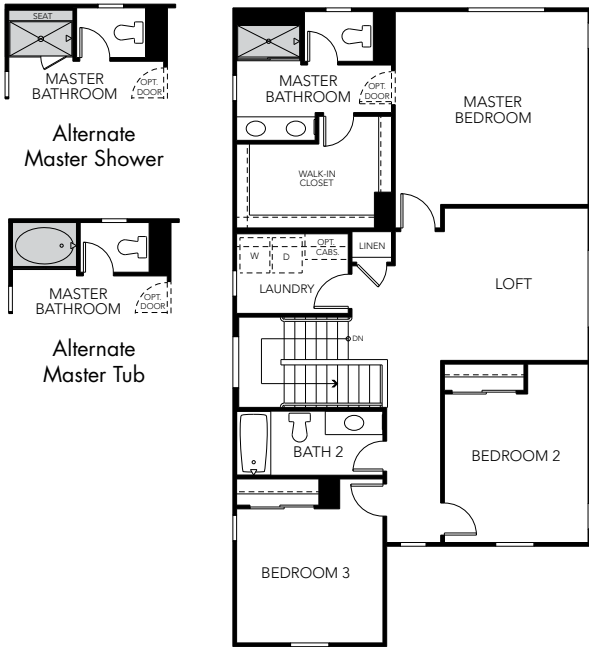
Approx. 2,246 Sq. Ft.

4 Beds

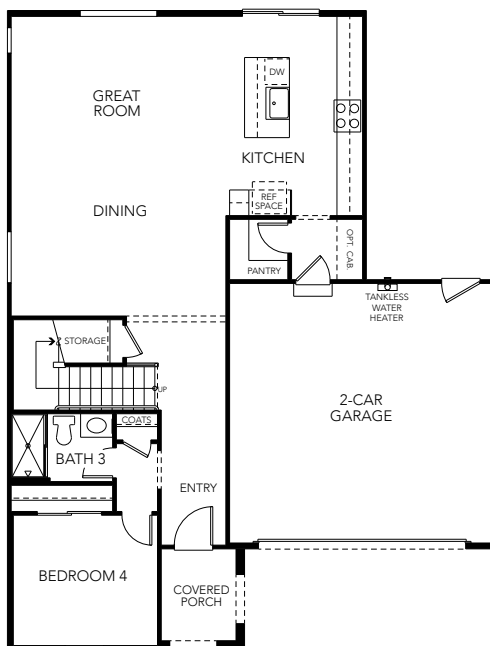
3 Baths

Loft

2-Car Garage



SECOND FLOOR



FIRST FLOOR



The prices of our homes, included features, plans, specifications, promotions/incentives, neighborhood build-out and available locations are subject to change without notice. Stated dimensions, square footage and acreage are approximate and should not be used as a representation of any home's or homesite's precise or actual size, location or orientation. There is no guarantee that any particular homesite or home will be available. Not all features and options are available in all homes. Unless otherwise expressly stated, homes do not come with hardscape, landscape, or other decorator items. Any photographs or renderings used herein reflect artists' conceptions and are for illustrative purposes only. Community maps, illustrations, plans and/or amenities reflect our current vision and are subject to change without notice. Maps not to scale. Photographs or renderings of people do not depict or indicate any preference regarding race, religion, gender, sexual orientation, disability, familial status, or national origin. Builder does not warrant the suitability of any trail for any use or for any person. Our name and the logos contained herein are registered trademarks of TRI Pointe Group, Inc. and/or its subsidiaries. CA Contractor's License No. 1018637. CA DRE License No. 02025660. © 2019 TRI Pointe Homes, Inc., a member of the TRI Pointe Group. All rights reserved. 4/19

Blanc

GLEN LOMA RANCH

PRELIMINARY

RESIDENCE 3

Approx. 2,363 Sq. Ft.

4 Beds

3 Baths

Loft

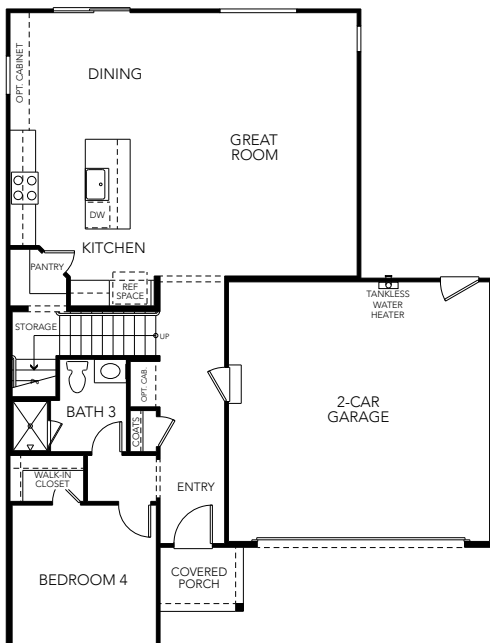
2-Car Garage

Floorplan Option:
Bedroom 5 at Loft



Optional Bedroom 5

SECOND FLOOR



FIRST FLOOR



The prices of our homes, included features, plans, specifications, promotions/incentives, neighborhood build-out and available locations are subject to change without notice. Stated dimensions, square footage and acreage are approximate and should not be used as a representation of any home's or homesite's precise or actual size, location or orientation. There is no guarantee that any particular homesite or home will be available. Not all features and options are available in all homes. Unless otherwise expressly stated, homes do not come with hardscape, landscape, or other decorator items. Any photographs or renderings used herein reflect artists' conceptions and are for illustrative purposes only. Community maps, illustrations, plans and/or amenities reflect our current vision and are subject to change without notice. Maps not to scale. Photographs or renderings of people do not depict or indicate any preference regarding race, religion, gender, sexual orientation, disability, familial status, or national origin. Builder does not warrant the suitability of any trail for any use or for any person. Our name and the logos contained herein are registered trademarks of TRI Pointe Group, Inc. and/or its subsidiaries. CA Contractor's License No. 1018637. CA DRE License No. 02025660. © 2019 TRI Pointe Homes, Inc., a member of the TRI Pointe Group. All rights reserved. 4/19